

## High-throughput agarose electrophoresis—now robot-compatible

Turn routine agarose gel electrophoresis into an automated, high-throughput operation with the E-Gel® 96 System. Each self-contained E-Gel® 96 gel includes agarose, ethidium bromide, and electrodes, all packaged inside a dry, disposable, UV-transparent cassette. The E-Gel® 96 System is compatible with most liquid handling robots to save you time and accelerate your high-throughput DNA screening efforts. With the E-Gel® 96 System, your DNA electrophoresis is:



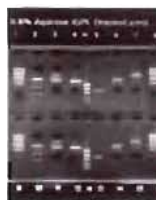
- Ultra fast—Analyze 96 samples on one gel in just 12 minutes
- Efficient—Run multiple gels simultaneously, over 20,000 samples per day
- Convenient—Compatible with 8-, 12-, and 96-tip robotic loading for automated operation

Streamline your high-throughput agarose electrophoresis applications with the E-Gel® 96 System today. To learn more, visit [www.invitrogen.com/egels](http://www.invitrogen.com/egels).

## Standard agarose electrophoresis four-times faster

E-Gel® double comb gels are unique, bufferless, pre-cast agarose gels that provide results four-times faster than conventional methods. Each E-Gel® includes agarose, electrodes, ethidium bromide, and innovative ion-exchange matrices all in a UV-transparent cassette. The double comb format allows you to load your samples with an 8-channel pipettor directly from a 96-well plate. You can then analyze 16 samples on the same gel with results in just 15 minutes. For more information, call Invitrogen today.

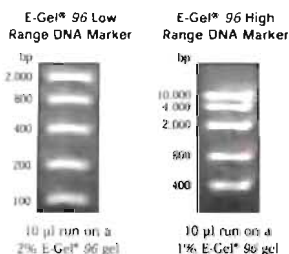
### 0.8% E-Gel® double comb gel results



Lane	Sample
1, 8, 9, 16	High DNA Mass Ladder
2, 10	pCDNA3.1 Neo I cut (150 ng)
3, 11	pCDNA3.1 uncult (120 ng)
4, 12	pUC18 Pst I cut (60 ng)
5, 13	Low DNA Mass Ladder
6, 14	1 kb PCR product
7, 15	3 kb PCR product

## Clear DNA band identification with E-Gel® 96 DNA Markers

The E-Gel® 96 DNA Markers accelerate DNA band analysis on the E-Gel® 96 System. These DNA markers are supplied premixed in sample loading buffer, eliminating marker preparation steps. Use the E-Gel® 96 Low Range DNA Marker on 2% E-Gel® 96 gels. Run the E-Gel® 96 High Range DNA Marker on the 1% E-Gel® 96 gels. Call Invitrogen today.



## PowerBase™ for easier E-Gel® electrophoresis

The PowerBase™ v.4 is an E-Gel® Base and power supply all in one featuring:

- A 15-minute run option to accommodate the E-Gel® double comb gel or 30-minute run option for the E-Gel® single comb gel
- A timer and lighted display that indicates when the two-minute pre run is complete and when to load samples, as well as an automatic shut-off when electrophoresis is complete to prevent the gel from overrunning
- Built-in AC adaptor that plugs into any standard electrical outlet to supply power



Power up your E-Gel® electrophoresis with the new E-Gel® PowerBase™. For more information, call Invitrogen today.

## Plug & Play.



E-Gels™—the easiest way to do electrophoresis.

First came the convenience of electricity. Now there's the convenience of Plug & Play electrophoresis. E-Gels™ make electrophoresis as simple as plugging a cord into an electrical outlet.

**Effortless electrophoresis.** E-Gels™ are pre-cast agarose gels that take the work out of electrophoresis. Everything you need—agarose, ethidium bromide and electrodes—is supplied in a ready-to-use, UV transparent cassette. You don't even need to add liquid buffer. Simply load your samples and go.



**Plug-in convenience.** With E-Gels™ you don't need an external power supply. That's because they run in their own self-contained PowerBase™. Simply snap your E-Gel® into the PowerBase™, plug it in, and you're off and running.

**Plug E-Gels™ in today.** With Plug & Play E-Gels™ you get the ultimate in electrophoresis convenience. To find out how you can plug E-Gels™ into your lab, contact Invitrogen today.



E-Gel® products are covered by Limited Label License No. 81. Please refer to the Invitrogen web site in catalogue for the corresponding Limited Label License.



1600 Faraday Avenue  
Carlsbad, CA 92008  
1 800 955 6288  
[www.invitrogen.com](http://www.invitrogen.com)

**United States Headquarters:**  
Invitrogen Corporation  
1600 Faraday Avenue  
Carlsbad, California 92008  
Tel: 1 760 803 7200  
Tel (Toll Free): 1 800 955 6288  
Fax: 1 760 803 7229  
Email: [tech\\_service@invitrogen.com](mailto:tech_service@invitrogen.com)

**European Headquarters:**  
Invitrogen Ltd  
3 Fountain Drive  
Inchmaree Business Park  
Parsippany PA4 DRF, UK  
Tel (Free Phone Orders): 0800 269 210  
Tel (General Enquiries): 0800 5345 5245  
Fax: +44 (0) 141 814 6287  
Email: [eu@tech@invitrogen.com](mailto:eu@tech@invitrogen.com)

**International Offices:**  
Argentina 5411 4556 0844  
Australia 1 800 331 6227  
Austria 0800 20 1087  
Belgium 0800 14894  
Brazil 0800 11 0575  
Canada 800 763 6236  
China 10 6849 2578  
Denmark 90 30 17 40

France 0800 23 20 79  
Germany 0800 083 0902  
Hong Kong 2487 8150  
India 11 572 3282  
Italy 02 98 22 201  
Japan 03 3663 7974  
The Netherlands 0800 099 1310  
New Zealand 0800 600 200  
Norway 08000 5456 5456

Spain & Portugal 900 181 461  
Sweden 020 26 34 52  
Switzerland 0800 848 800  
Taiwan 2 2651 5156  
UK 0800 838 380  
Other countries see our website

[www.invitrogen.com](http://www.invitrogen.com)