

SimplyBlue[®] SafeStain[™] for Fast, Sensitive, and Safe Coomassie[®] Staining

For fast, sensitive, and safe Coomassie[®] staining results, try Invitrogen's ready-to-use SimplyBlue[®] SafeStain. Simply speaking, you'll get:

- **Fast results**—bands develop in minutes
- **Maximum sensitivity**—detect as little as 7 ng of protein (reduced BSA)
- **Safe, non-hazardous staining**—does not require acid/alcohol fixatives or destains.

Description	Quantity	Cat. no.	Price
SimplyBlue [®] SafeStain (Enough reagent for 50 mini-gels)	1 L	LC6060	\$75

Save 50%

Now you can save 50% on SimplyBlue[®] SafeStain. Just complete the back side and return this card by September 30, 2000 to learn how.

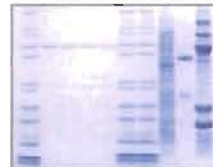
SimplyBlue[®] is a trademark of Invitrogen Corporation. Coomassie[®] is a registered trademark of Imperial Industries, PLC

000124

1600 Faraday Avenue, Carlsbad, CA 92008 • P: 800.955.6288 • F: 760.603.7201 • www.invitrogen.com

Sensitive Staining Results
with SimplyBlue[®] SafeStain

1 2 3 4 5 6 7 8 9 10



The following samples were separated on a NuPAGE[®] Novex[®] 4-12% Bis-Tris gel and then stained with SimplyBlue[®] SafeStain.

Lanes 1,6,7: 10 µl Mark12[™] Standard
Lane 2: 100 ng reduced BSA
Lane 3: 50 ng reduced BSA
Lane 4: 25 ng reduced BSA
Lane 5: 12.5 ng reduced BSA
Lane 6: 2 µg *E. coli* lysate
Lane 7: 1 µg rabbit IgG
Lane 8: 6 µg protein lysate

Invitrogen

Mass Spectrometry- Compatible Silver Staining with the SilverQuest[™] Kit

For maximum silver staining sensitivity that's compatible with mass spectrometry analysis, try Invitrogen's SilverQuest[™] Silver Staining Kit. This kit offers:

- **Maximum sensitivity**—as low as 0.3 ng of protein in just 30 minutes
- **Efficient trypsin digestion**—peptide cross-linking prevented
- **Optimum mass spec performance**—silver ions removed from protein bands

Sensitive staining results with the SilverQuest[™] Kit

Lanes 1,7: 5 µl reduced Mark12[™] Standard diluted 1:5
Lanes 2,3,4,5,6: 5 µl reduced protein mix diluted 1:5, 1:25, 1:100, 1:600, and 1:1100, respectively
Lanes 8,9,10: 1.2, 0.6, and 0.3 ng non-reduced BSA, respectively
Arrows indicate 0.3 ng protein.



The samples listed above were run on a NuPAGE[®] Novex Bis-Tris 4-12% Gel and then stained with the SilverQuest[™] Kit.

To receive your **FREE** SilverQuest[™] Kit brochure, return this card today.

713.02.1834 04/00/02

Invitrogen
life technologies

1600 Faraday Avenue Carlsbad, CA 92008
P: 800.955.6288 F: 760.602.6500
www.invitrogen.com

E-Gel[®] 96 System—Automated, Plug & Play electrophoresis

E-Gel[®] 96 gels are pre-cast, 96-well agarose gels that turn routine electrophoresis into an automated, high-throughput operation. With the E-Gel[®] 96 system, DNA analysis is:

- **Ultra-fast**—Analyze 96 samples on one gel in just 12 minutes
- **Efficient**—Run multiple gels simultaneously, over 20,000 samples per day
- **Convenient**—Compatible with 8-, 12-, and 96-tip robotic loading systems

Accelerate DNA screening with the E-Gel[®] 96 system. To receive your **FREE** demonstration CD, return this card today.

713.021.438 04/00/02

1600 Faraday Avenue Carlsbad, CA 92008
P: 800.955.6288 F: 760.602.6500
www.invitrogen.com

Invitrogen
life technologies



GEN 6/02