

## Don't discount proven performance and exceptional reliability

Use Novex® Tris-Glycine Mini Gels for consistent, reliable, high-performance protein separation and analysis

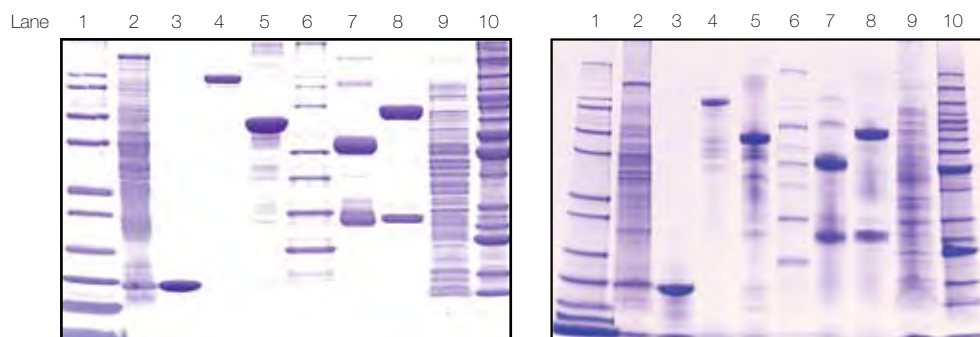
With Novex® Tris-Glycine Mini Gels, you'll experience:

- Unrivaled performance – sharp and distinct bands
- Reliability you can count on – No lot-to-lot or gel-to-gel variability and No backorders
- Complete versatility – available in a variety of gel percentages, well formats, and separation ranges for all your protein separation needs

See the difference a gel makes

Avoid band smearing with Novex® Tris-Glycine Gels

Protein bands on the Novex® Gel are sharp, while those on the Pierce Precise™ Gel appear fuzzy and smeared, indicating protein degradation (Figure 1).



**Figure 1 – Novex® Tris-Glycine Mini Gel vs the Pierce Precise™ Gel.** A. Novex® 4-20% Tris-Glycine Gel B. Pierce Precise™ 4-20% Gel, run in BupH™ Tris-HEPES SDS Running Buffer. Samples used in both gels: Lane 1: 10 µl Mark12™ Unstained Standard; Lane 2: 10 µg rat liver lysate; Lane 3: 6 µg lysozyme; Lane 4: 6 µg β-galactosidase; Lane 5: 6 µg BSA; Lane 6: 10 µl MagicMark™ XP Western Protein Standard; Lane 7: 6 µg h-IgG; Lane 8: 6 µg h-IgM; Lane 9: 10 µg E. coli lysate; Lane 10: 10 µl BenchMark™ Protein Ladder

Don't settle for less

Leave fuzzy, smeared bands and discounted gels behind. Order your Novex® Tris-Glycine Mini-Gels and experience the difference sharp protein bands make in your analysis today.

To learn more, visit [www.invitrogen.com](http://www.invitrogen.com) or contact [AM NAME], your local Invitrogen Account Manager, at 800 955-5288, x[XXXXX] or email [am.name@invitrogen.com](mailto:am.name@invitrogen.com)

